




**ELIZADE UNIVERSITY,
ILARA-MOKIN,
ONDO STATE. NIGERIA**



**FACULTY: HUMANITIES AND MANAGEMENT SCIENCES
DEPARTMENT: HISTORY AND LANGUAGES**

**2nd SEMESTER EXAMINATIONS
2012/2013 ACADEMIC SESSION**

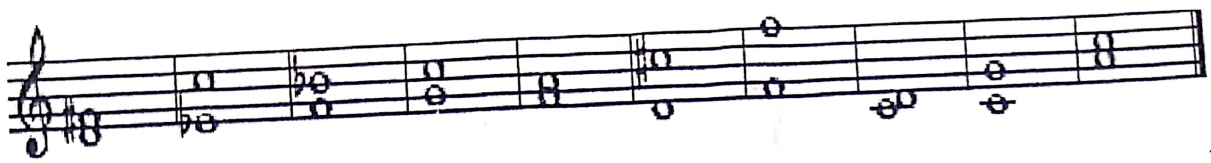
COURSE CODE: PFA 106
COURSE TITLE: FUNDAMENTALS OF MUSIC
DURATION: 2 HOURS


HOD'S SIGNATURE

INSTRUCTION: Answer all questions. (Question 1, 4 and 6 should be done on music manuscript.)

Question No.		Total Mark
1.	Construct the scale of the following keys;	
	i. B flat major (with key signature)	2 Marks
	ii. G major (without key signature)	2 Marks
	iii. D major (with key signature)	2 Marks
	iv. A major (with key signature)	2 Marks
	v. F major (with key signature)	2 Marks
		<u>10 Marks</u>
2.	Write the alphabetic name of the following notes;	
		5 Marks
		5 Marks
		<u>10 Marks</u>

3. Identify the following Intervals:



10 marks

4. Write a major triad on each of the following notes:



10 Marks

5. Define the following musical terms in a simple sentence.

- i. Rhythm
- ii. Intensity
- iii. Interval
- iv. Scale
- v. Pitch

2 Marks

2 Marks

2 Marks

2 Marks

2 Marks

2 Marks

10 marks

6. Transpose the following musical piece a tone higher:



10 Mar